



ADVANCE CASTINGS (P) LTD.

MANUFACTURER OF GRADED S.G.I. AND C.I.CASTINGS

AN ISO9001:2015 CERTIFIED COMPANY

GATT. NO 533, TAMGAON, MIDC GOKUL SHIRGAON, KOLHAPUR-416234

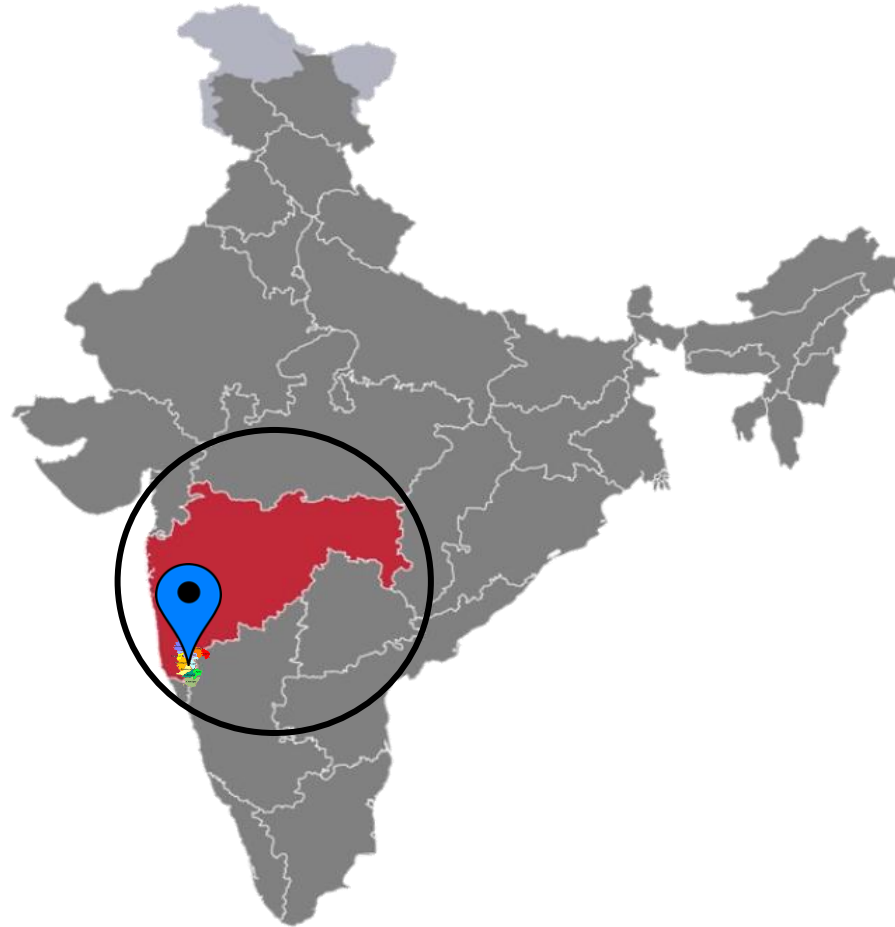
E-MAIL – info@advancecastings.in

Web - <http://www.advancecastings.in>

GSTIN – 27AALCA9410E1ZR

Company Location

Gatt No-533, Tamgaon, MIDC Gokul Shirgaon, Kolhapur, Maharashtra-416234



Nearest Air Port

Kolhapur – 4 KM

Belgavi – 115.8 KM

Goa – 215.6 KM

Pune – 247 KM

Mumbai – 382.7 KM

Bengaluru-629.8 KM

VISION



➤ To become a leader in manufacturing of Graded Castings and Machined components that ensures customer satisfaction through excellent quality products and superior services.

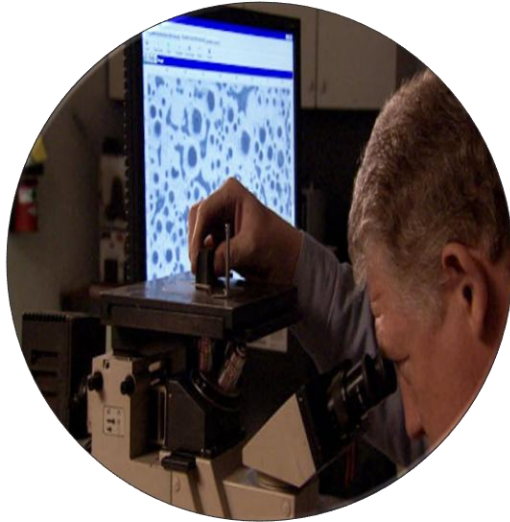
MISSION



- Provide excellent quality product and service in response to customer needs.
- Focus on Continuous Improvement and agility, to meet the changing needs of customers.
- Innovate, Develop and Accept new systems to achieve our customers Vision
- Continuous Improvement in business relationship with our customer, supplier and employees.
- Always Innovate for better Tomorrow

Quality Policy

We Advance Castings Pvt. Ltd are committed to enhance the satisfaction of our customers continuously, by on time supplying good quality products through total involvement of employees by adopting continual improvement of the Quality Management System & its processes with all satisfying applicable Requirements.



Quality Objectives

1. Continuous Improvement in Customer Satisfaction
2. Zero Customer Complaint
3. Reduction in Rejection %
4. On Time Delivery
5. Establish Zero Defect processes



- Manufacturer of C.I. and S.G.Iron Graded Machined Castings



Installed capacity
750 MT/Month



-Casting weight range 0.3 -50 kg
Single Piece

-Volume range of 05 - 3200 nos per
month



Manufacturing Built up
area 20,000 Sq. Feet



Part Variety -75 Nos



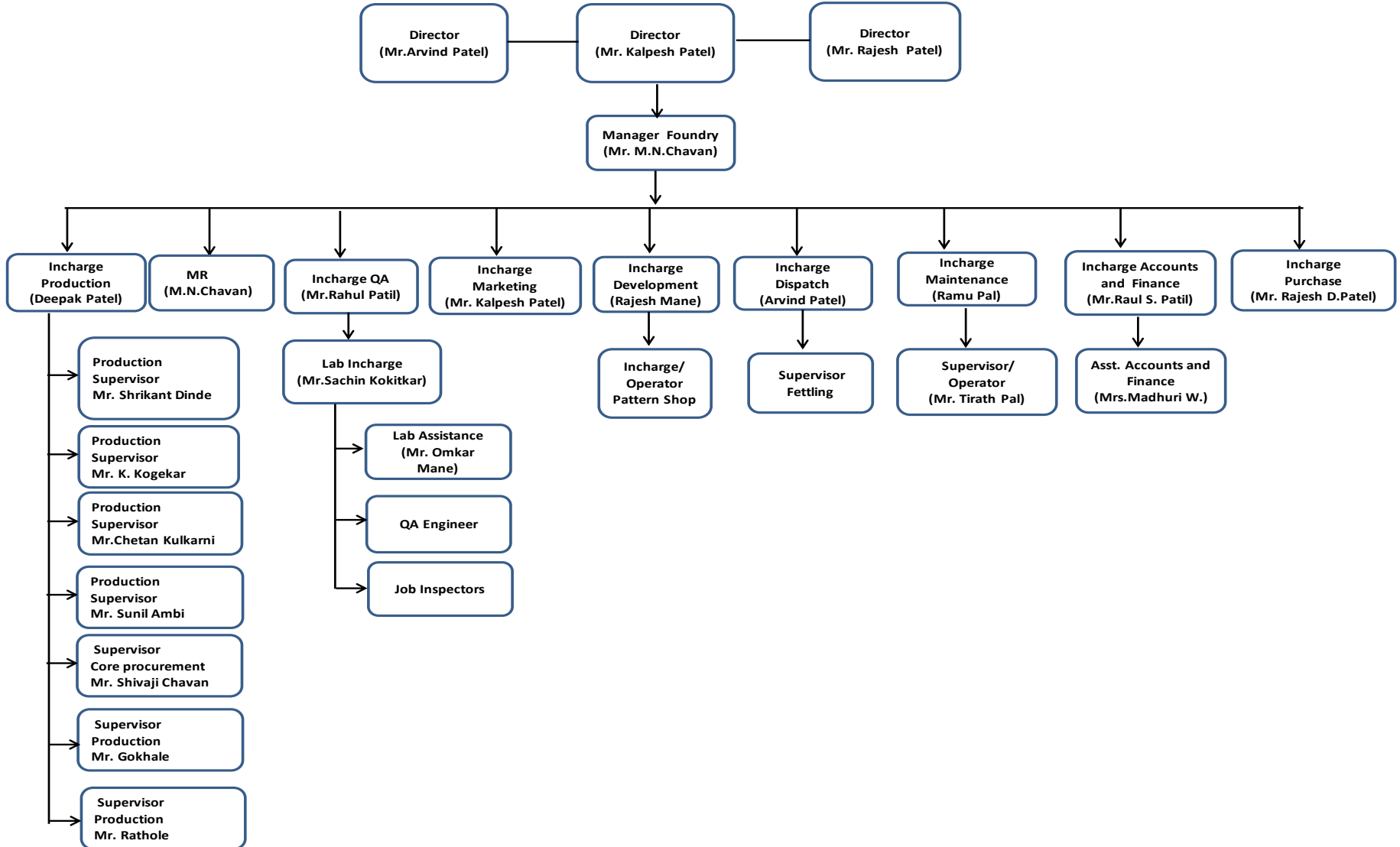
170 work force



Integrated precision
machining Facility

Organization Structure

ADVANCE CASTINGS (P) LTD. ORGANIZATION STRUCTURE AT FOUNDRY



Milestones

Advance Metacraft LLP

(Under Commissioning Capacity -900 mt.)

2026

Advance Solar Power

Capacity-2MW

2023

Cap.Enhanced by
250 Mt at ACPL.

Karmyog Machining LLP

2019

Advance Castings (P) Ltd

Capacity-500 mt.

2015

2017

Kolhapur
Engineers LLP.

TUVINDIA

Certificate

Management system as per
ISO 9001:2015



The Certification Body TUV INDIA PVT. LTD. hereby confirms as a result of the audit, assessment and certification decision according to ISO/IEC 17021-1:2015, that the organization

ADVANCE CASTINGS PVT. LTD.
Gat No. 533, Near MIDC Gokulshirgaon,
Tamgaon, Kolhapur - 416 234,
Maharashtra,
India

operates a management system in accordance with the requirements of ISO 9001:2015 and will be assessed for conformity within the 3 year term of validity of the certificate.

Scope

Manufacture of Graded Cast Iron & Nodular Iron (S.G. Iron) Castings.

Certificate Registration No. **QM 03 01841**
Audit Report No. **PUN/AUD/25-26/1371**

Valid from **25.07.2025**
Valid until **24.07.2028**
Initial certification **25.07.2016**



Visit our database to
verify the validity of
this certificate.

Mumbai, **29.05.2025**

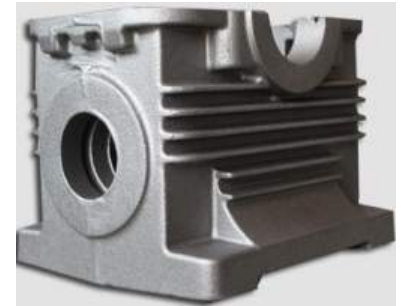
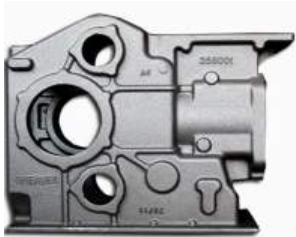
Certification Body at TUV INDIA PVT. LTD.

To verify the validity of this certificate, please visit <https://www.infocertsearch.org>

TUV INDIA PVT. LTD.
801, Raheja Plaza 1, L.B.S Marg,
Ghatkopar (W) Mumbai - 400 086,
India
www.tuv-nord.com/in



PRODUCT RANGE





Kirloskar
Oil Engines



VST
TILLERS TRACTORS LTD.



IGW
THE POWER
OF TRANSMISSION



PREMIUM



ELECON
GEARING THE FUTURE



Godrej

Godrej & Boyce Mfg. Co. Ltd.



ZANVAR GROUP



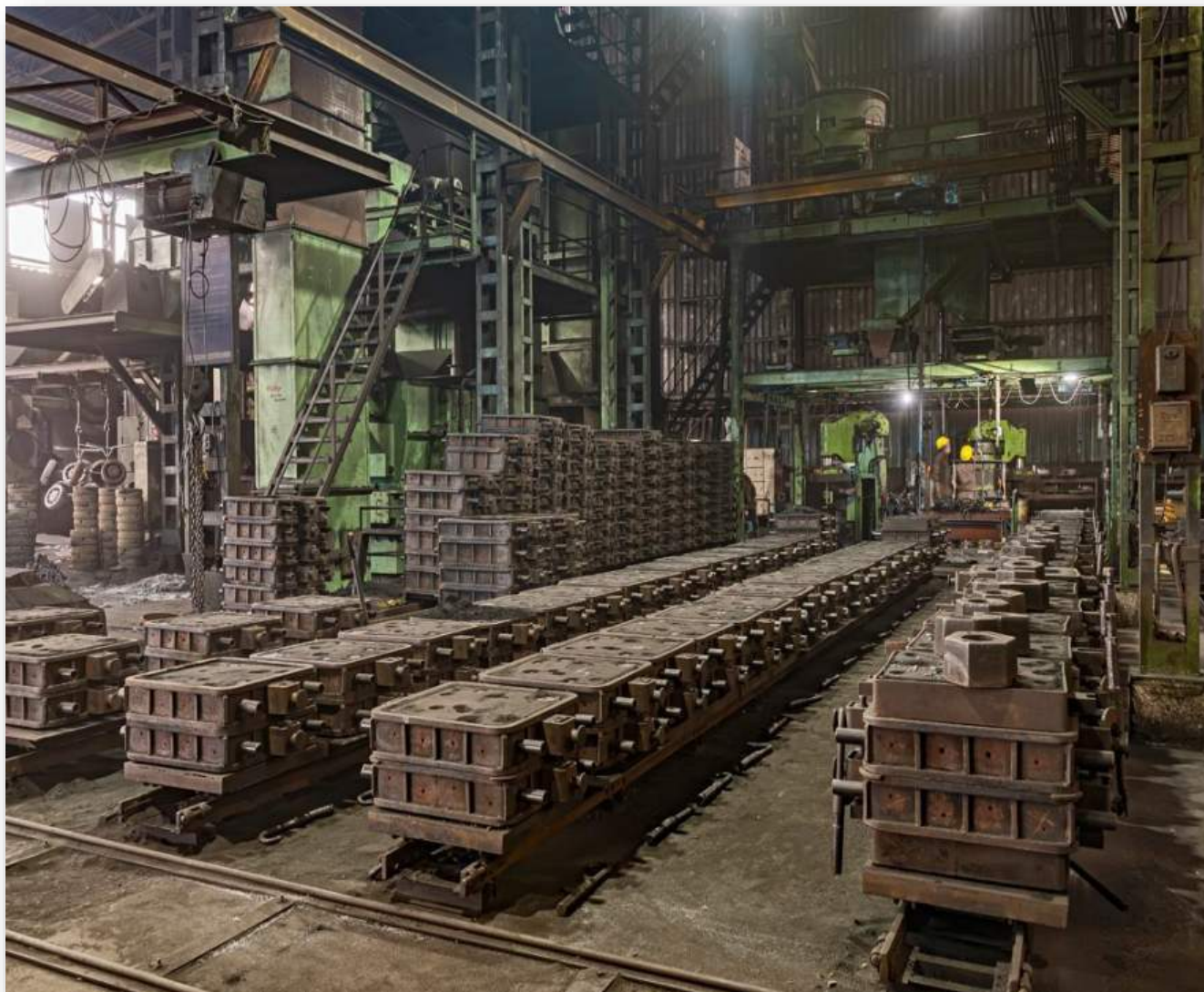
MICRO SUPREME
AUTO INDUSTRIES (I) PVT.LTD.



SINCE 1960
Comet
INNOVATE TO SERVE

Semi Fully Automated Sand Plant

- 60 Mt. Sand Hopper
- Sand Cooler
- Dust Collector
- Intensive Mixer
- Auto Water Dosing
- Mould Handling Tracks
- Knockout Machine



Sarvamangala make Pneumatic Jolt, Squeeze Molding Machines

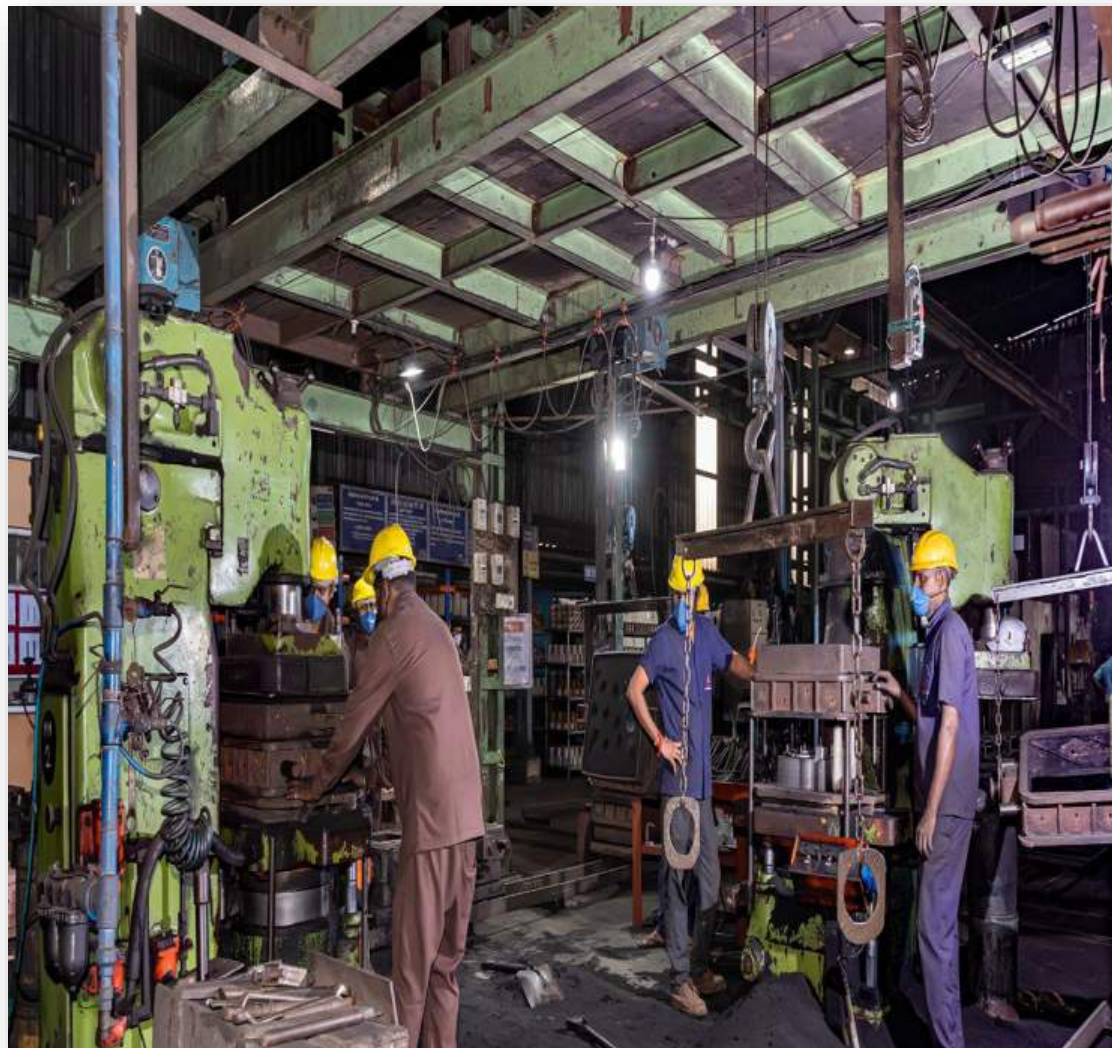
-ARPA 450 – 01 Set

-ARPA 350 – 01 Set.

-Mold Box Size –

24" X 28" X 8"/10" Ht.

20" X 22" X 6"/8" Ht.



Indo Power make Induction Melting Furnaces

-500 kg -01 Set

-300 Kg -01 Set

With All required melting Aids

-Electronic Weighing Scale

-Over Head pouring structure

-SGI Treatment Ladles

- Pouring Ladles.



Cold Box Core Making Facility

Makewell Make Cold Box Core Making Machine

-Capacity -25 Kg

-Core Production per Hour-70 Nos



Core Heating Oven

-Aided with heating cycle inter locked .



Inhouse facility supported

- Hanger Blast Machine-01 No.
- Tumb Blast Machine-02 Nos
- Bench, Pedestal, Hand Grinders
- Painting Booth



Hanger Blast



Tumb Blast Blast

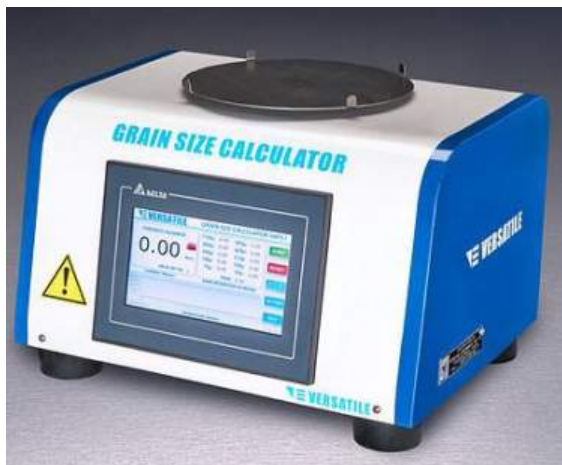
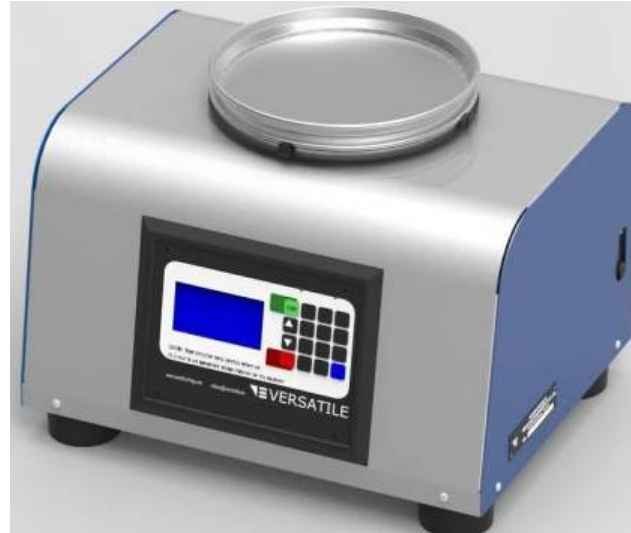


Painting Booth

MOLDING SAND QUALITY CONTROL FACILITY



MOLDING SAND QUALITY CONTROL FACILITY



METALLURGICAL QUALITY CONTROL FACILITY AT MELTING



CE Meter



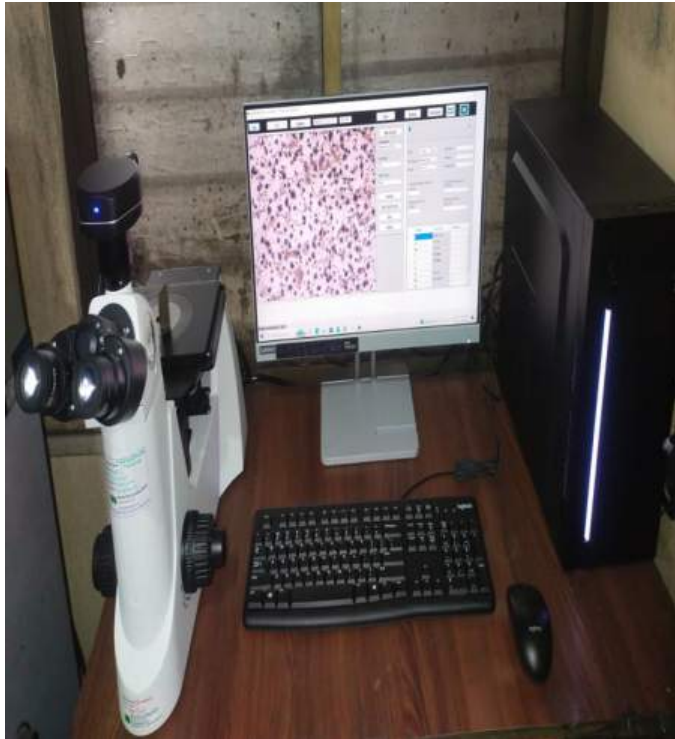
Infra red based Pyro meter



Portable Pyro Meter



Hanging Weighing Balance for Treatment control



Inverted Metallurgical Microscope



Spectrometer



BHN Tester

COATING QUALITY CONTROL FACILITY



Ford Cup



DFT Meter

Additional Coating Facility



Powder Coating



www.milansurfacecoating.com

Distance from ACPL to Milan Powder Coating – 2.5 Km

Spray Painting

- PU liquid spray painting
- Epoxy liquid spray painting.
- (Conveyorized Spray PT+ Spray Painting)



Powder Coating

- Epoxy Polyester Powder Coating
- Pure Polyester Powder Coating
- Dielectric Powder coating
- Primer + Topcoat powder coating
- Wood finish Powder Coating (Conveyorized Spray PT + Powder coating)
- FBE (Fusion bond epoxy)



Coating Plant overlook

PLANT OVERLOOK



8 STAGE SPRAY PRETREATMENT LINE & WATER DRY OFF OVEN



POWDER CURING OVEN (CAMEL BACK TYPE)

Testing Facility at Coating Plant



1 CONICAL MANDRAL



2 CROSS CUT ADHESION



3 VISCOSITY METER



4 IMPACT TESTER



5 GLOSS METER @60°



6 TITRATION SETUP & DIGITAL pH METER



7 PENCIL HARDNESS TESTER



8 DRY FILM THICKNESS METER



MACHINING FACILITY

KARMAYOG MACHINING LLP

AN ISO9001:2015 CERTIFIED COMPANY

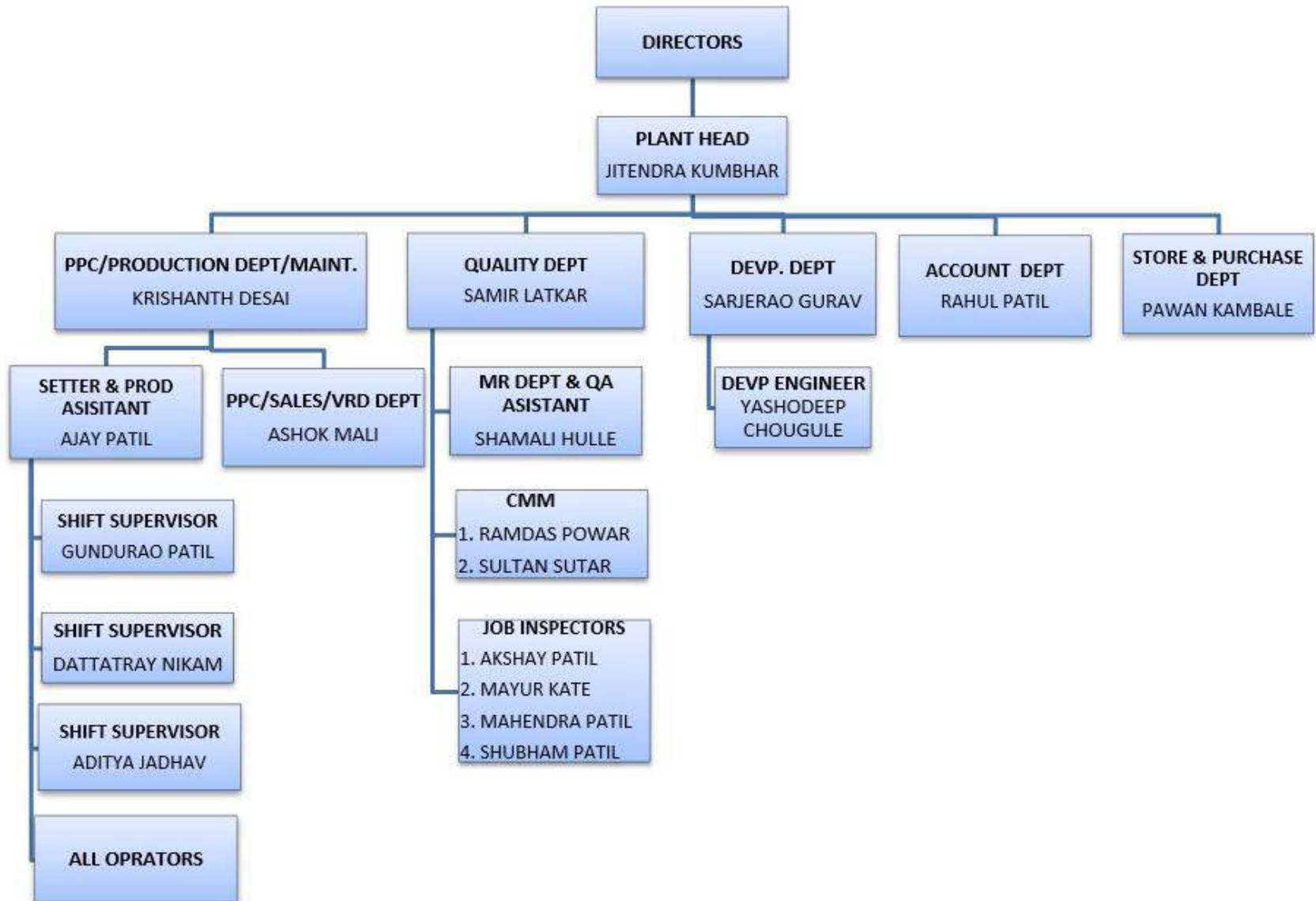
G 79, MIDC GOKUL SHIRGAON, KOLHAPUR-416234

E-MAIL – ceo.machineshop@tkmgroun.in

Web - <http://www.advancecastings.in>

KARMYOG MACHINING LLP

ORGANISATION CHART- MACHINE SHOP



MACHINING FACILITY

Sr.No	Make	Machineries	Model	Qty.
1	DOOSAN	HMC	HC500	1
2	BFW	HMC	PRIMA-44	3
3	AMS	VMC	MCV 450	4
4	LMW	VMC	JV80	1
5	BFW	VMC	BMV-50	2
6	LMW	VMC	MCV - 550	1
7	ACE-INDIA	CNC Turning	SJ-500	1
8	LMV-INDIA	CNC Turning	LX20TL5	1

DOOSAN MAKE HMC HC 500 II SERIES

- Pallet size -500 X 500

-XYZ Travel distance 850mm X 700 mm X 750 mm



BFW MAKE HMC PRIMA-44

- Pallet size -500 X 400

-XYZ Travel distance 600mm X 600 mm X 600 mm



LMW MAKE VMC (JV80 WITH UCAM 250MM 4TH AXIS)

- PALLET SIZE 1050X500mm.

- XYZ TRAVEL 800X 540 X 600 mm



BFW MAKE VMC (BMV-50 WITH AUTO PALLET CHANGER)

Rapid traverse - X/Y/Z 800 x 510x510mm



LMW MAKE CNC TURNING CENTER (L X 20T 45)

- Chuck dia-250mm
- Max Turning Die -350mm.



AMS MAKE VMC (MCV-450 WITH AUTO PALLET CHANGER)

- PALLET SIZE- 800 X 435
- XYZ TRAVEL -800 X 450X 500 mm.



INSPECTION FACILITIES

Sr. No.	Gauge / Instrument Type	Qty.
1	CMM	1
2	2D Height Gauge	1
3	Surface Tester	1
4	Milipore Test Equipment	1
5	Bore Gauge	14
6	Plunger Dial	18
7	Plug Gauge	46
8	Thread Plug Gauge	22
9	External Micrometer	5
10	Depth Vernier Caliper	3
11	Vernier Caliper	2
12	Shallow Type Bore Gauge	2
13	Height Gauge	2
14	Surface Plate	2
15	Snap Gauge	5
16	Pistol Caliper	1
17	Surface Roughness Comparator	1

DIMENSIONAL QUALITY CONTROL FACILITY

Electronica Make 2D Height Gauge



Spectra Make Coordinate Measuring Machine (10.8.6)



QUALITY CONTROL AND MARKING FACILITY

Millipore Test Equipment

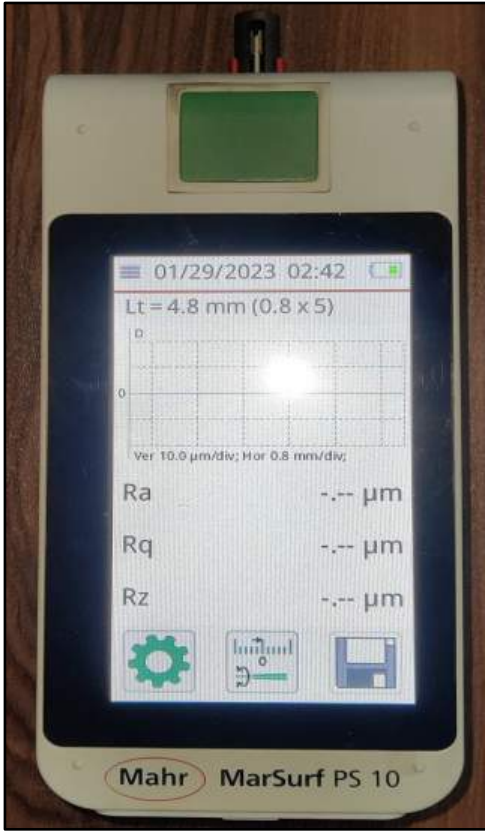


Laser Marking Machine



DIMENSIONAL QUALITY CONTROL FACILITY

Mahr Make Surface Tester



Air Gauges



Leakage Tester



Rewards and Recognitions



Winner

“Zero Fetting a Myth or Reality?”

Sept-2022



Platinum Award
At SQIC FY 2022'



Best Delivery Performance
At Supplier Conference 2023



First Runner up

“Zero Defect Project Review”-2023



First Runner up

“Zero Defect Project Review”-2024



Winner of “ SQIC-2024



Thank You